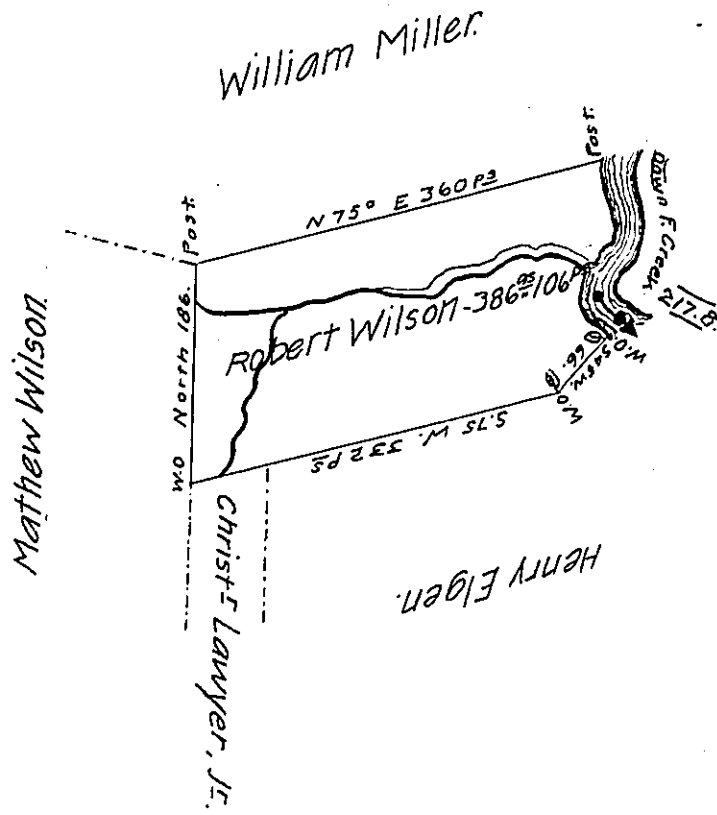


River Courses.

5.17° E. 79
 5.39° E. 21
 5.24 W. 6
 5.73 W. 15.
 West 24.8.
 5.55 W. 12
 5.4½° E 33
 5.72° E 27.
 217.8 P^s

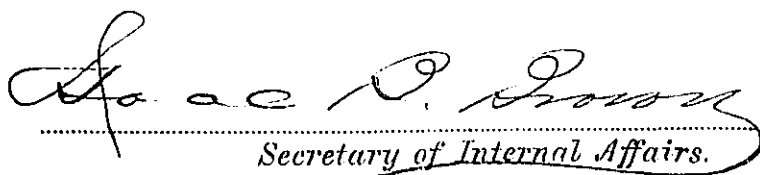


Situate on the West side of and adjoining French Creek in Allegheny County
 Containing 386⁹⁵ 106 P^s and allowance of Six P^t Cent for Roads &c. Sur-
 veyed the 5th Day of June 1794 In pursuance of his improvement Dated
 the 3^d Day of Ap^r, 1792.

W^m Power, D^x9^t

To Daniel Brodhead, Esq^t,
 Surveyor General.

IN TESTIMONY that the above is a copy of the original remaining on file in
 the Department of Internal Affairs of Pennsylvania, made
 conformably to an Act of Assembly approved the 16th day of
 February, 1833, I have hereunto set my Hand and caused
 the Seal of said Department to be affixed at Harrisburg,
 this twenty fifth day of September 1906.


 Secretary of Internal Affairs.